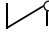


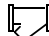
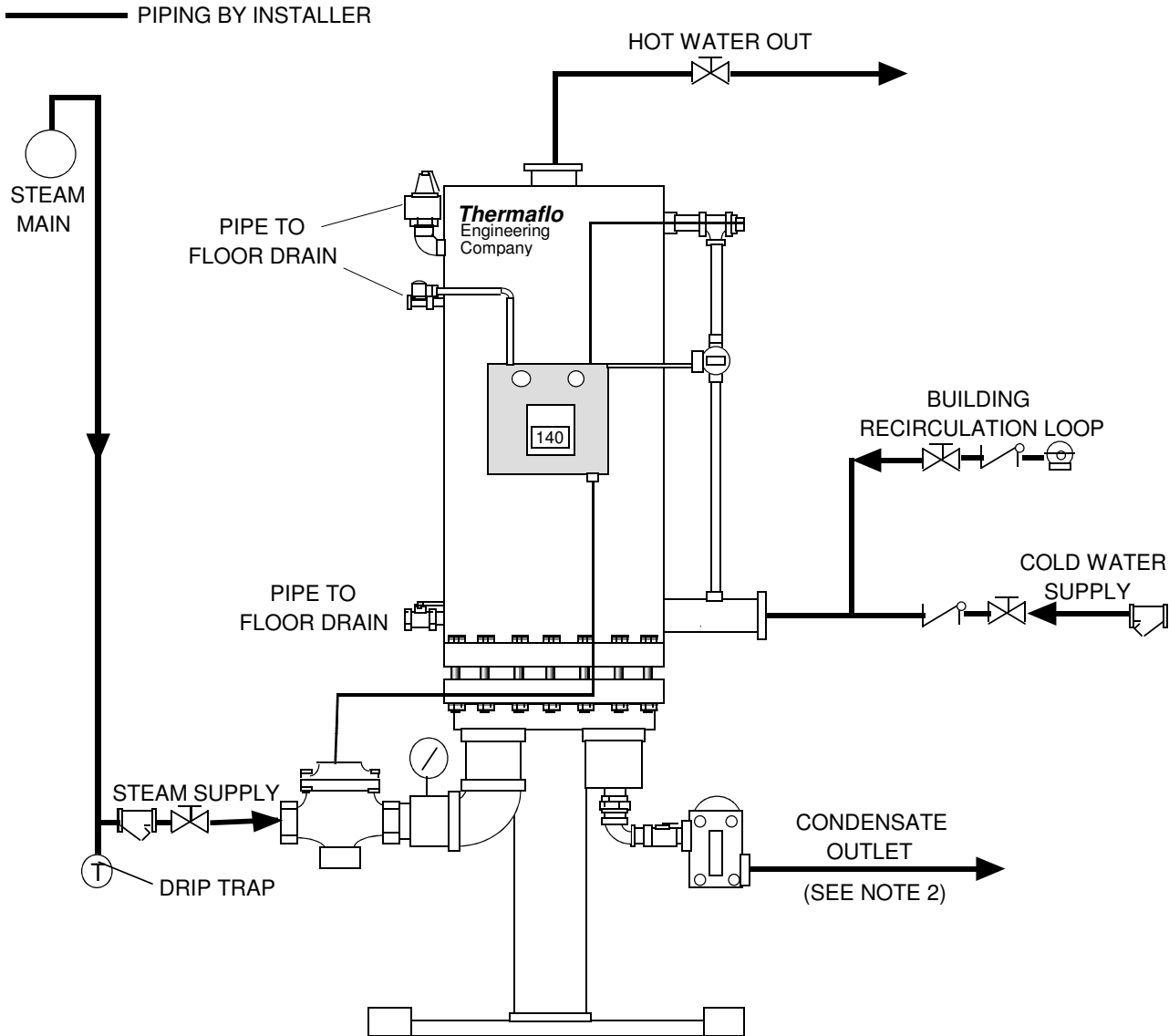
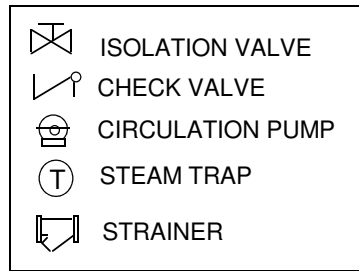
	ISOLATION VALVE
	CHECK VALVE
	CIRCULATION PUMP
	STEAM TRAP
	STRAINER

## TH-750V Steam Fired Single Unit Piping Hookup

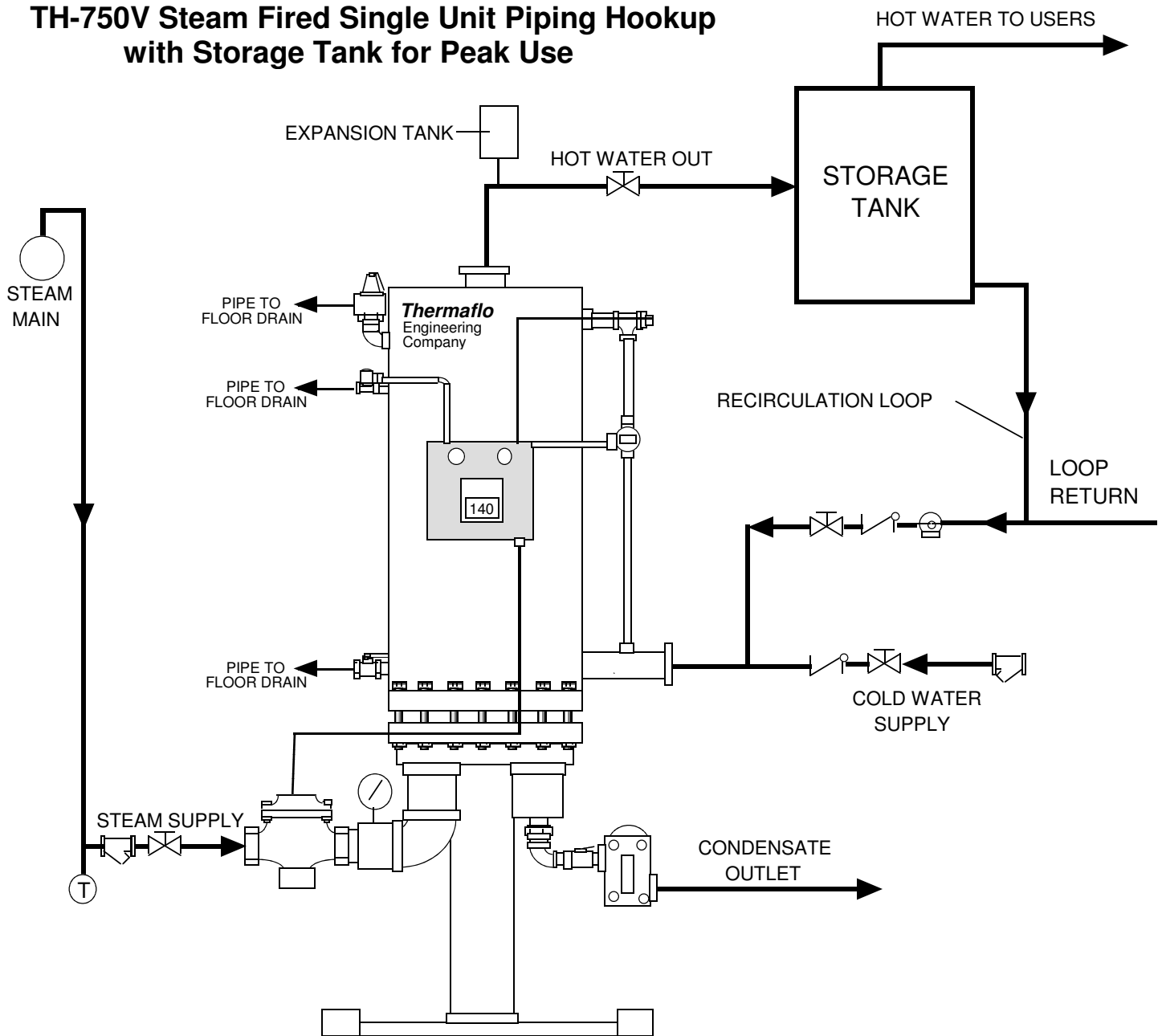


### Notes:

1. SUGGESTED PIPING DESIGN. DESIGNER SHOULD CONSULT LOCAL CODES TO VERIFY COMPLIANCE.
2. ALWAYS PIPE OUTLET CONDENSATE TO GRAVITY ATMOSPHERIC RETURN LINES, TO AVOID WATERHAMMER AND INTERNAL STEAM SPACE FLOODING.
3. ALWAYS PIPE SUPPLY STEAM FROM THE TOP OF THE HEADER AS SHOWN, AND INSTALL A MAIN DRIP BEFORE CONTROL VALVE INLET.
4. WHEN USING THE TH-750 FOR DOMESTIC LOOP SUPPLY IT IS HIGHLY RECOMMENDED TO INSTALL A THERMAFLO MASTER BLEND VALVE TO PREVENT ANY CHANCE OF SCALDING.

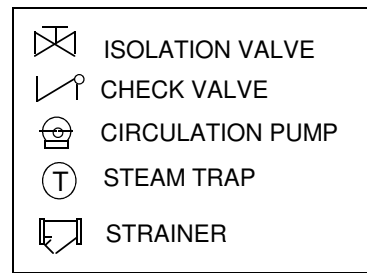


## TH-750V Steam Fired Single Unit Piping Hookup with Storage Tank for Peak Use

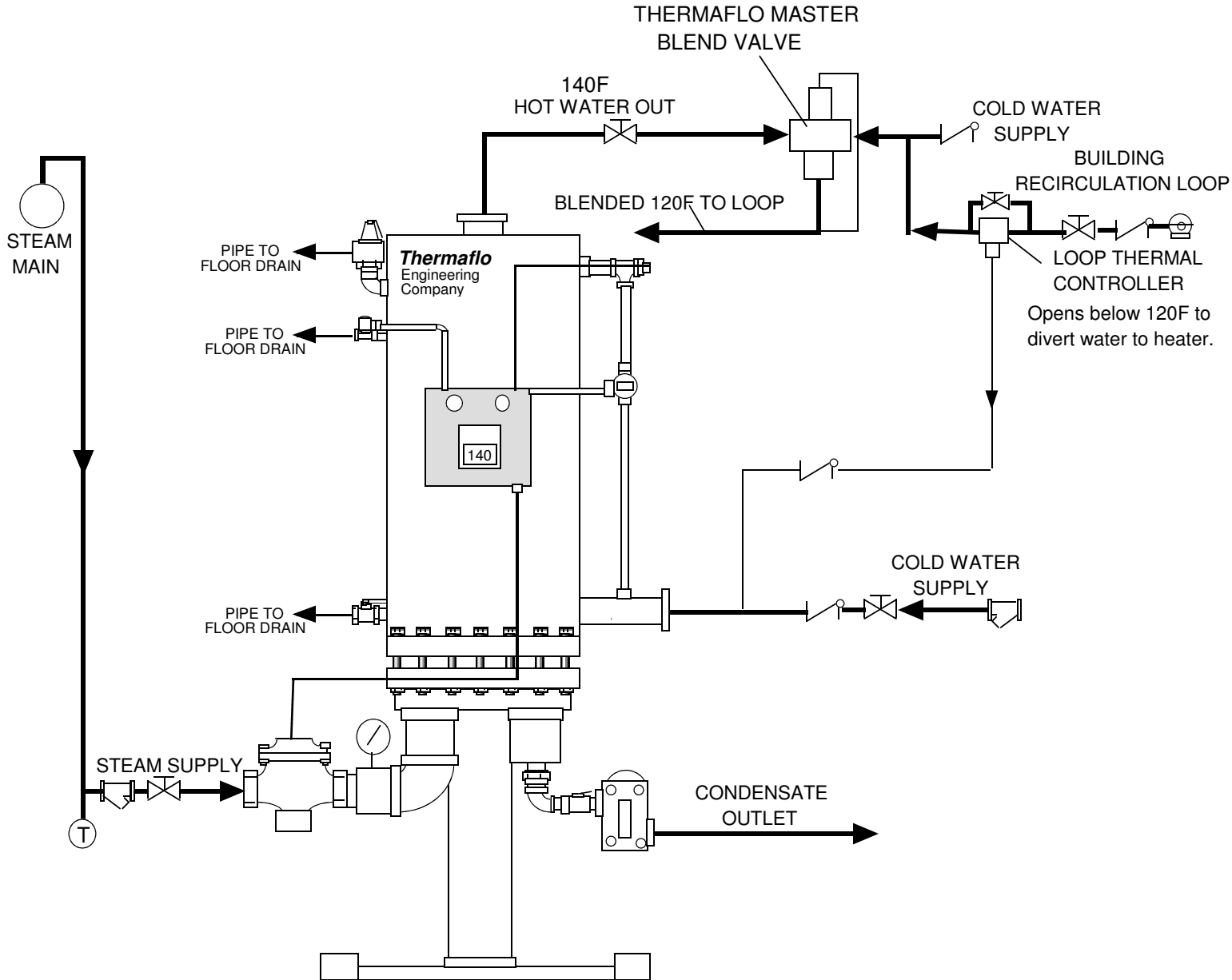


### Notes:

1. SUGGESTED PIPING DESIGN. DESIGNER SHOULD CONSULT LOCAL CODES TO VERIFY COMPLIANCE.
2. ALWAYS PIPE OUTLET CONDENSATE TO GRAVITY ATMOSPHERIC RETURN LINES, TO AVOID WATERHAMMER AND INTERNAL STEAM SPACE FLOODING.
3. ALWAYS PIPE SUPPLY STEAM FROM THE TOP OF THE HEADER AS SHOWN, AND INSTALL A MAIN DRIP BEFORE CONTROL VALVE INLET.
4. WHEN HOT WATER IS USED FOR DOMESTIC PURPOSES A MASTER BLEND VALVE IS HIGHLY RECOMMENDED TO PREVENT ANY CHANCE OF SCALDING.



## TH-750V Steam Fired Single Unit Piping Hookup w/ Blend and Thermal Loop Diverter



### Notes:

1. SUGGESTED PIPING DESIGN. DESIGNER SHOULD CONSULT LOCAL CODES TO VERIFY COMPLIANCE.
2. ALWAYS PIPE OUTLET CONDENSATE TO GRAVITY ATMOSPHERIC RETURN LINES, TO AVOID WATERHAMMER AND INTERNAL STEAM SPACE FLOODING.
3. ALWAYS PIPE SUPPLY STEAM FROM THE TOP OF THE HEADER AS SHOWN, AND INSTALL A MAIN DRIP BEFORE CONTROL VALVE INLET.
4. BLEND CONTROL VALVE AND THERMAL LOOP PIPING AND VALVES BY THERMAFLO ENGINEERING COMPANY.
5. MASTER BLEND VALVES SHOULD ALWAYS BE USED ON DOMESTIC WATER SYSTEMS TO PREVENT ANY CHANCE OF SCALDING.