



VSH Series Hotwater Storage Heaters

General Description

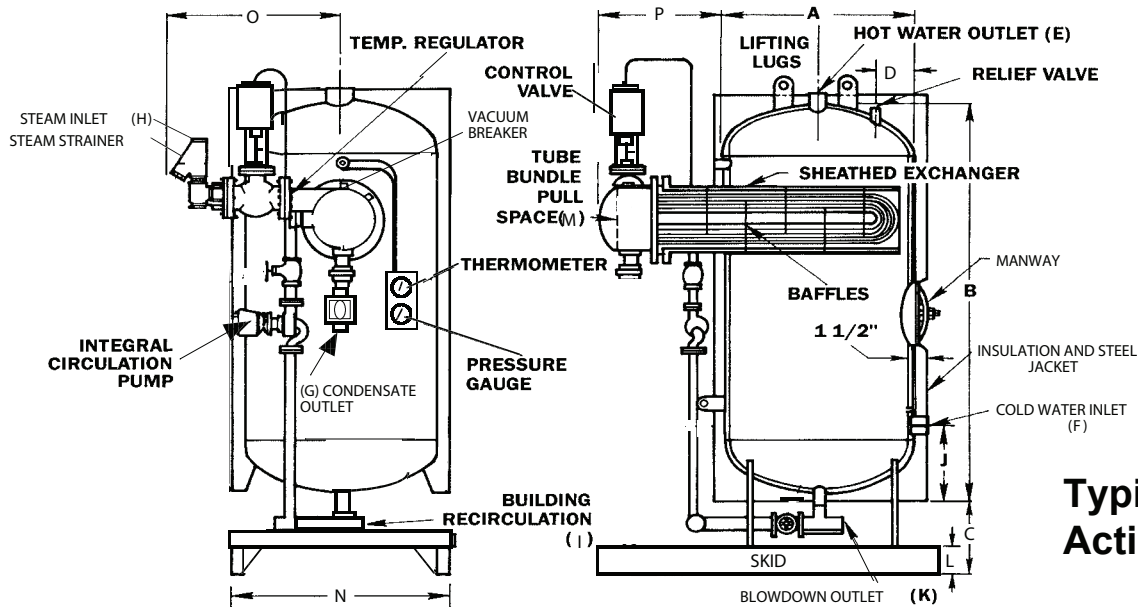
The Thermaflo VSH Steam Fired Hot Water Storage Heater is a complete factory package system that offers instant response to your hot water demands. Vertical design saves valuable floor space with optional horizontal type storage tanks offered as an option. All Thermaflo Storage Heaters feature the unique “Accuchanger” heat load anticipator that senses demand changes and feed forwards the steam control valve so that accurate temperature control is maintained over the entire flow range. The U tube 2 pass internal heating coil enables quick recovery so hot water demands are met at all times.

As with all Thermaflo Engineering products, they are engineered with field experience so that you are always assured of a fit and forget installation saving time, energy and maintenance. Thermaflo Engineering unsurpassed high quality by the people who know STEAM.....

Standard VSH Storage Heater Features

- ☐ ASME Code Section VIII Construction
- ☐ National Board Stamped and Registered
- ☐ Cement, Glass or Potable Water Epoxy Lining
- ☐ Pneumatic or Self Acting Steam Control Valve
- ☐ All Steam Control Valves are Single Seated for Tight Shutoff on “No Load Standby Times”
- ☐ Full PID temperature controller and safety shutdown
- ☐ Heat Load “Accuchanger” to Anticipate Load Changes Providing Feedback to the Control Valve for Close Temperature Control over Varying Demands
- ☐ Integral Bronze Recirculation Pump System
- ☐ ASME CODE Relief Valve
- ☐ Vacuum Breaker to Assure Condensate Drainage
- ☐ High Limit Safety Shutdown System
- ☐ Inlet Steam Trap Assembly to Prolong Control Valve Life
- ☐ U-Bend Internal Heating Coil Removable for Easy Service
- ☐ Full-Port Bottom Storage Tank Blowdown Valve
- ☐ Insulation Package with Metal Jacket for Efficiency
- ☐ Various Tank Capacities from 40 Gallons to 1400 Gallons
- ☐ Double and single wall tube designs





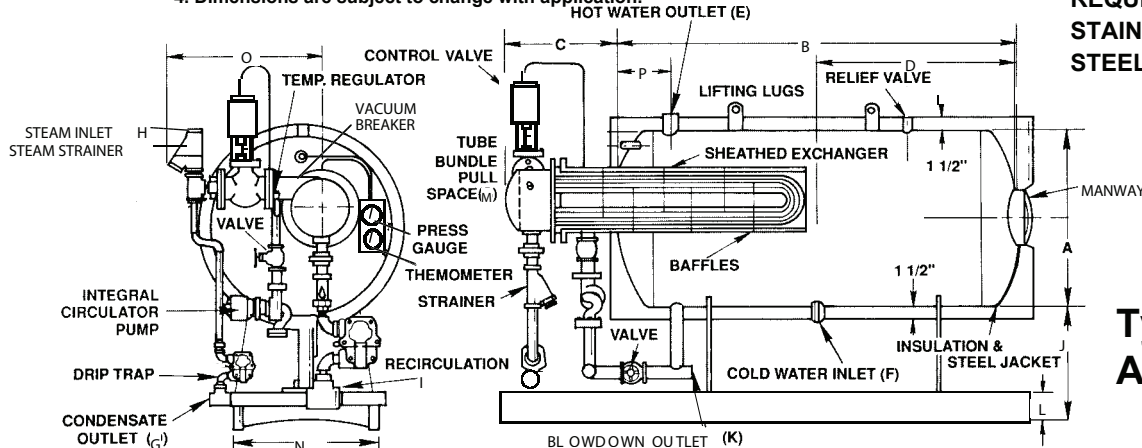
Typical Self Acting Version

VERTICAL STORAGE TANK DIMENSIONS AND CONNECTIONS

MODEL NUMBER	STORAGE CAPACITY	A	B	C	D	E/F	G	H	I	J	K	L	M	N	O	P
V-200	200	30	72	16	8	2	2	1.5	2	14	1	3	36	36	30	20
V-250	250	30	84	16	8	2	2	1.5	2	14	1	3	36	36	30	20
V-300	300	36	72	16	9	2	2	1.5	2	14	1	3	41	36	30	22
V-350	350	36	84	16	12	2.5	2	1.5	2	16	1.5	3	41	36	30	22
V-400	400	42	79	16	12	2.5	2	1.5	2	16	1.5	3	41	42	30	22
V-500	500	42	94	16	12	2.5	2	2	2	16	1.5	3	47	42	30	22
V-600	600	42	110	16	12	2.5	2	2	2	18	1.5	3	47	42	30	28
V-750	750	48	108	16	12	3	2	2	2	18	2	3	47	48	30	28
V-850	850	48	118	16	14	3	2	2	2	18	2	3	51	48	34	28
V-1000A	1000	66	84	16	14	3	2	2	2	20	2	3	51	54	34	30
V-1300	1300	60	119	16	14	4	2	2.5	2.5	20	2	4	51	64	36	30
V-2000	2000	72	118	16	18	4	2	2.5	2.5	20	2	4	51	76	36	30

Notes: 1. All dimensions are in inches and storage capacity in gallons.
2. M dimension tube bundle pull space required.
3. P dimension may vary with load requirements. Consult Factory.
4. Dimensions are subject to change with application.

MANWAY NOT REQUIRED ON STAINLESS STEEL TANKS



Typical Self Acting Version

HORIZONTAL STORAGE TANK DIMENSIONS AND CONNECTIONS

MODEL NUMBER	STORAGE CAPACITY	Storage Capacities Available to 5000 Gallons and Custom Size Tanks to Fit Space														
		A	B	C	D	E/F	G	H	I	J	K	L	M	N	O	P
H-150	150	36	60	16	30	2	2	1.5	2	24	1	3	36	30	30	20
H-300	300	42	72	16	36	2	2	1.5	2	24	1	3	36	30	30	20
H-500	500	42	96	16	48	2	2	1.5	2	18	1	3	41	36	30	20
H-600	600	42	108	16	54	2.5	2	1.5	2	18	1.5	3	41	36	30	20
H-750	750	48	108	18	54	2.5	2	1.5	2	18	1.5	3	41	42	30	20
H-1000	1000	54	120	18	60	2.5	2	2	2	18	1.5	4	47	42	30	22
H1000S	1000	60	96	22	48	2.5	2	2	2	18	1.5	4	47	48	30	28
H-1200	1200	60	120	22	60	3	2	2	2	18	2	6	47	48	36	28
H-1500	1500	60	144	24	72	3	2	2	2	18	2	6	50	48	36	28
H-2000	2000	72	120	24	60	3	2	2	2	18	2	6	50	64	40	30

Notes: 1. All dimensions are in inches and storage capacity in gallons.
2. M dimension tube bundle pull space required.
3. C dimension may vary with load requirements. Consult Factory.
4. Dimensions are subject to change with application.